

selected conservation by design clients:

UNITED KINGDOM

- The Royal Collection Trust
- Bank of England
- Bodleian Library
- British Library
- British Museum
- Brontë Parsonage Museum
- Cambridge University Library
- Cecil Higgins Art Gallery & Museum
- English Heritage
- Fitzwilliam Museum - Cambridge
- Hayward Gallery
- Imperial War Museum
- Kelvingrove Museum - Glasgow
- Manx Museum - Isle of Man
- Museum of the History of Science - Oxford
- National Archives
- National Archives of Scotland
- National Galleries of Scotland
- National Gallery - London
- National Library of Scotland
- National Library of Wales
- National Museums - Liverpool
- National Museums and Galleries of Wales
- National Trust
- Natural History Museum
- Nidderdale Museum
- Royal Academy
- Royal Commission on the Ancient & Historic Monuments of Scotland
- Royal Museum of Scotland
- Science Museum
- Sheffield Millennium Galleries
- Talylyn Railway Company - North Wales
- Tate Britain
- The City of Edinburgh Council
- Victoria & Albert Museum
- Wellcome Institute

INTERNATIONAL

- The Vatican
- Archives d'Etat - Genève
- Archives Nationales D'Haiti
- Bibliothèque Nationale - Paris
- Biblioteca Nacional - Madrid
- Cayman Island Archives
- Centraal Museum - Utrecht
- Falkland Island Archives
- Government of Hong Kong
- Historisches Museum - Basel
- King Fahd National Library - Riyadh
- Koninklijke Bibliotheek - Den Haag
- Landesmuseum - Zurich
- Metropolitan Museum - New York
- Musée Condé - Chantilly
- Musée de Kanton - Luzern
- Musée de L'Armée - Paris
- Musée de Louvre - Paris
- Musée Rodin - Paris
- Museo del Prado - Madrid
- Museo Nacional Centro de Arte Reina Sofía - Madrid
- National Archive - Sri Lanka
- National Archives - India
- National Archives of Ireland
- National Library - Iceland
- National Library - New Zealand
- National Library - Sweden
- National Library Czech Republic
- National Library of Ireland
- National Museum of Ireland
- National Museum - India
- Rijksmuseum - Amsterdam
- Rijksarchief - Utrecht
- Royal Library - Denmark
- Saint Catherine's Foundation
- Stadtmuseum - Basel
- Stadtarchiv - Köln
- Stadtarchiv - Frankfurt
- State Russia Museum - Moscow
- Stedelijk Museum - Amsterdam
- University of Oslo

"The choice of Planorama was I admit mostly down to cost. But also the adaptability and CXD's readiness to consult, suggest and improve on our brief. We will probably soon be coming back to you for another drawer unit, because the print room is getting very full!"

Tate Britain (see front cover)

"We use the drawer in combination with a display cabinet to exhibit samples from our written archive. Grimsthorpe is part of the A2A (Access to archives) project and in addition to placing our catalogues on line we have produced a display of material that explains the A2A project and the Grimsthorpe archive to visitors. Objects shown in 2007 included recipes from a 16th century housekeepers book, car insurance documents from the turn of the 19-20 century and receipts/invoices from Joshua Reynolds for portraits he had painted. Visitors could open different drawers to study the items on a 'stand alone' basis, without supervision from Grimsthorpe staff. Choosing the right piece of equipment was based on a selection process involving my searching the internet, drawing up a short list and then selecting the one I considered best for the job. I valued the bespoke service offered by your company, combined with a genuine interest in meeting my needs. I visited the showroom and spent time going through all options. I also spoke to other customers and sought their opinions."

Grimsthorpe and Drummond Castle Trust Ltd.

"I have many family documents ranging from 150 year old birth and marriage certificates, to Nationalisation records, an Ellis Island entry card and Passenger ship artifacts, to family letters. In my research I read of the horrors of UV and acid destruction. I decided I needed to do something to protect my family history. I searched the web for over a month, I talked to museum archivists and professional genealogists. All with little success. Then one day last year I located Conservation by Design Limited. They were the only full service company that could meet all of my needs. I chose a custom built Planorama cabinet with a UV protected glass top for display of larger objects. They also met my desire to be able to rotate those items for display by designing and building two UV protected A-Frame units. These allow me to easily remove drawers from the unit for placement in the A-Frames. The units are extremely well designed and built with precision and they look great."

Don Smith - Family Archive

"We chose the Planorama as the best solution to displaying specimens from our lace collection. It is big enough to show different types of lace in different drawers, and protects the delicate fabrics from excessive light and UV while still allowing access by museum visitors."

Cowper and Newton Museum

"The Planorama cabinet has certainly fulfilled every hope that we had for it. We chose your company simply because the British Museum and Library said that you were the best - and it turned out that you are!"

Robert Senior - Private Collector



Mixed Sources
Product group from well-managed forests, and other controlled sources
www.fsc.org Cert no. TT-COC-002466
© 1996 Forest Stewardship Council

PLANORAMA® GUARANTEE

Conservation by Design Limited manufactures Planorama® products to the highest standards of quality and workmanship. Planorama® products are guaranteed to be free from defects in materials and workmanship under normal use for one year following the original date of purchase.



PLANORAMA® - available at Cami nv
Edward Vlietinckstraat 8 - 8400 Oostende - Belgium
T: +32-(0)59-708666 - F: +32-(0)59-806867 - E: info@cami-nv.com

www.cami-nv.com

ZLIT 014 Planorama



BY APPOINTMENT
TO HER MAJESTY QUEEN ELIZABETH II
SUPPLIERS OF CONSERVATION STORAGE,
EQUIPMENT AND DISPLAY PRODUCTS
CONSERVATION BY DESIGN LIMITED
BEDFORD

planorama® storage systems



- Multifaceted modular drawer system
- Solves difficult storage problems
- Combines function with aesthetics
- Bespoke storage and display cabinets
- Conservation quality



Conservation By Design

available at Cami nv - Oostende

planorama® sophisticated storage and display modules

Planorama® from Conservation By Design Limited, acknowledged leader in the field of conservation materials and methods, is a contemporary storage furniture and display system that combines innovation, creative design, cutting-edge technology and craftsmanship - offering greater flexibility over standard plan chests.

Introduced in the 1970s to the Dutch National Archive, the Planorama® drawer system with its revolutionary patented polyester drawer base was initially developed to assist in the preservation of cultural objects in their original condition. The removable drawers allow the user to study and document items, without unnecessary handling.

Hand built by craftsmen, the Planorama® aluminium drawer storage system is still bespoke and designed particularly to meet your own requirements. The engineering materials used in its construction are exclusive to Planorama® and the anodised aluminium extrusions give a contemporary, elegant and stylish appearance to these tailor made cabinets.

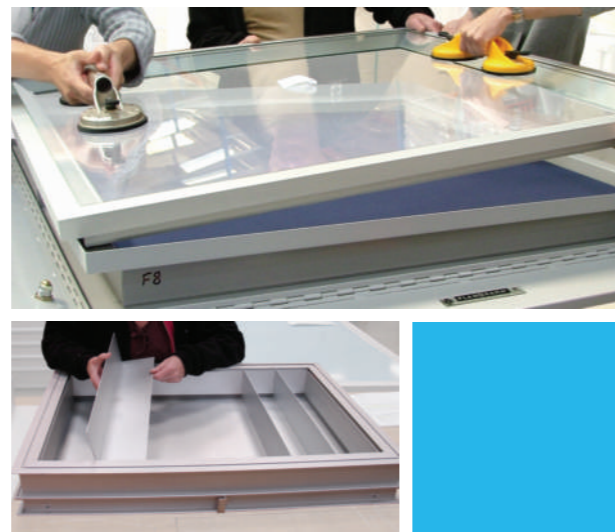


Original Planorama® units installed in 1970's at Dutch National Archive.

Today's Planorama® storage furniture and display applications are more wide-ranging and now encompass museums, archives, libraries, art galleries, specialist retailers and corporate clients.



The Stanley Kubrick Archive uses Planorama® in their contemporary offices.



Planorama® are precision built by craftsmen.

The service ethos starts as soon as you contact us, as a bespoke item each Planorama® is designed and built to the customer's individual specification, whether it is used purely for long term storage, a showcase for display or as workshop/studio furniture. As part of the specification process a detailed drawing is always prepared for your approval before commencing the scheduling of materials and production. This ensures successful project implementation and helps to give you a realistic delivery timetable.

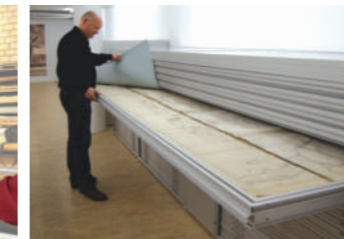
Unlike mass produced conventional steel furniture cabinet production, technicians hand-build each cabinet and drawer to a fine tolerance and finally the whole unit is tested to ensure smooth operation. This process ensures long term reliability of the unit and real user satisfaction.



This 2.3m wide x 2.3m deep drawer for National Museum of Ireland is used to house large items.



10mm drawer in a small module to house a photographic collection.



5m wide Planorama® at Hoogheemraadschap Van Rijnland, Holland

In more than 15 years of attending to conservation needs from all over the world Conservation By Design has carved out an unrivalled reputation with the experience and passion to tackle any storage need with skill and attention to detail.

Arrangements can be made to install the Planorama® unit, if required. Perhaps you have a specific weight loading on your floor or difficult access? Need installation outside normal working hours? Or have special security needs? Whatever your requirements Conservation By Design are willing to help.

Planorama® is a fundamental product within the Conservation By Design portfolio and encompasses all the company's core values, which are caring for customers, innovative thinking and excellence in design, products and service.

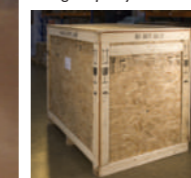
Find out more about our extensive range of conservation materials, products, equipment and services at www.cami-nv.com



London Print Studio - utilised the glazed top as a showcase with storage underneath.



Patronato de la Alhambra (Granada) doubled their storage capacity within the same space.



Planorama® ready for shipping.



Accessory Products: Acid free box board, Acid free millboard, Acid free boxes, Corrosion Intercept, Plastazote® foam, Polyester pockets, Plastic containers, Charcoal felt, Charcoal cloth etc.

Wellcome Library use Planorama®

"The Wellcome Library's extensive collection includes large format collection material, such as original posters, Tibetan thangkas, banners and drawings, that required more appropriate housing and storage than we were able to provide before we moved the collections. Conservation by Design's Planorama seemed the best option for the care of this collection, in that it provided a more long term storage solution, particularly for our large more fragile items in the new space. Material is now easily accessible, as well as being safely housed in a system that protects them from over-handling. The public can now view items in storage without us having to unnecessarily move them, which would have caused further damage."

Preservation and Conservation Department, Wellcome Library.



innovative, intelligent design combined with craftsmanship

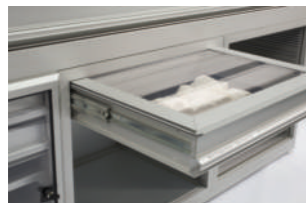
Planorama® from Conservation By Design is a bespoke modular storage system based on precision anodized aluminium extrusions and castings designed to optimise interior storage and display for all your conservation needs.

Multifunctional

- Made to measure to fulfil individual storage needs of width, depth and drawer height configuration, (Including ISO formats 4A, 2A, A0, A1, A2, A3, A4).
- Planorama® modules are designed to house a **variety of drawer depths, trays or shelves** in one cabinet for maximum flexibility. Profiles from 10mm to 108mm are stocked - but even deeper drawers can be fabricated if required.
- Module units are designed to be stackable vertically when space efficiency is key.
- Choice of drawer base depending on needs for strength, weight loading, capacity or special storage application.
- Multifunctional drawer base range includes zero depth polyester, aluminium sheet, polycarbonate, fluted polycarbonate, honeycomb panel or high strength Planopanel.

Modular Construction

- The lightweight structure of aluminium and patented polyester drawer base allows more drawers in less space than conventional plan chests, thus minimising floor space.
- High strength to weight ratio of aluminium makes the Planorama® lighter, with lower floor loading - **approx 1/3 weight of steel cabinets.**
- Modular construction - enables the addition of further units at a future date.
- Each cabinet has smooth glide runners for easy movement of drawers, trays or shelves.



Individual drawer covers offer secure visible storage.



Heavy duty telescopic drawers are used for heavier items such as glass plate negatives - shown in brown anodised finish

- Low maintenance drawer runners without the use of lubrications or moving parts.
- Drawers can be fully removable or held by pull out locking drawer stops.
- Unique, simple key device for unlocking drawer stops.
- Heavy duty telescopic drawer runners are used for heavier items such as glass plate photographic negative.
- Full width drawer handle houses integral label holder for individual identification of drawer content.
- Durable hard anodised surface, easy to keep clean.
- The underside of the drawers are smooth to avoid any interference with the contents of the drawer below.



Planorama® can be fitted to mobile shelving bases.

Added Security



Robust locking systems.

Unique simple key device.

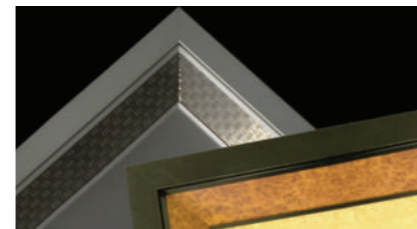
- Optional glazed security top - the high security profile enables contents of the top drawer to be visible with the added protection of **individual drawer locking.**
- Secure options of pull-out locking for individual drawers, anti-tilt mechanism or central locking of the whole cabinet.
- Individual drawer covers in glass, polycarbonate or acrylic for contents to be securely viewed but not accessible to unauthorised users.
- The top cabinet profile has been designed to accept glass thicknesses up to 11.5mm - thereby meeting UK Museum security guidelines.

Presentation



Glazed top profile for display

- The glazed top profile allows the top module to be turned in to a **showcase.**
- The matt silver anodised aluminium of the Planorama® gives a contemporary, smart and stylish finish.
- Coloured cabinets and drawers are available by using anodised or powder coating finish to meet aesthetic needs.
- Wooden cabinet cladding or drawer front covers can be offered if units need to blend into the existing surroundings.
- Appearance of the glazed display top can be enhanced by using decorative inserts to the profile.

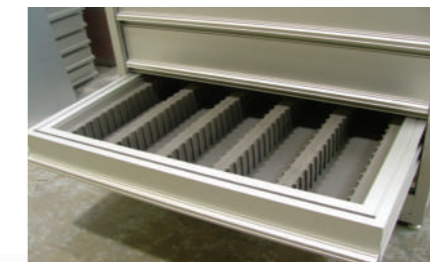


Decorative inserts for top profile.

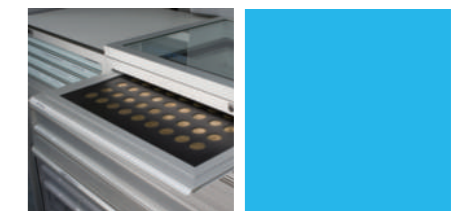
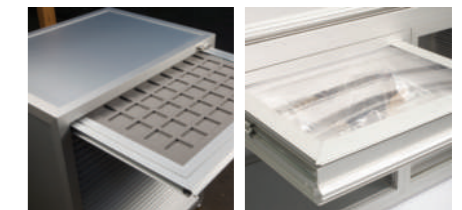
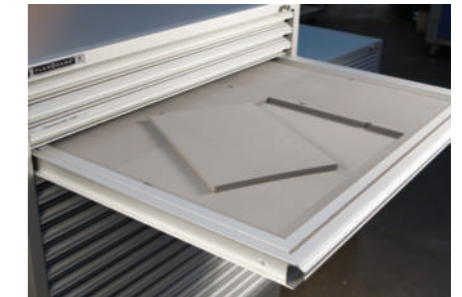
- Vertical display frames - called **Framorama** - are designed to take drawers to easily exhibit contents.

Cabinet options

- **Customised inserts** in a variety of materials including Plastazote® foam, aluminium, acrylic, charcoal felt, charcoal cloth, Corrosion Intercept® and conservation mount board.
- Durable work top using non porous, stain resistant Trespa®.
- The cabinet can be manoeuvrable using lockable fixed and swivel wheels or castors.
- Hinged solid or transparent doors can be incorporated for added security or to further minimise dust or light ingress.
- Additional UV protection using specialist glazed laminated drawer covers.
- Horizontal object fixing system with non harmful and non permanent transparent protective holding strips.
- Special acrylic holding devices for supporting and displaying items such as charters and seals.
- Acrylic back-mounted strips prevent contents falling as drawer opens.



Customised drawer inserts.



Drawer depths, trays, shelves and customised inserts.



Safe, stylish,
flexible and functional
storage display system

Honiton Lace delight visitors

"The volunteers who work at Allhallows Museum are delighted with the Planorama and so are our visitors. It enables us to display our largest examples of Honiton lace which we were previously unable to do. It is safe, versatile and conservation friendly. The team from Conservation by Design who advised us, designed and installed it were excellent."

Allhallows Museum Honiton



ergonomic solutions to effective conservation storage



Pictures show; full width drawer handle, integral label holder, manoeuvrability, dust brushes built in to the profile, height adjustable feet and robust locking.

easy to order

STEP ONE	1	STEP FOUR	4
Outline your requirements by completing and returning the Planorama® questionnaire (also downloadable from our web site) or alternatively send us your outline specification - see guide below.		Final bespoke requirement designed, drawing and final specification sent to customer for approval.	
STEP TWO	2	STEP FIVE	5
Based on your requirements a quotation will be sent to you within 7 days.		Your made to measure Planorama® is scheduled and 1-12 week production date confirmed.	
STEP THREE	3	STEP SIX	6
You confirm your requirements and place order.		Delivery and/or installation of custom-built Planorama®.	

Call us for a Planorama® questionnaire on +32(0)59-708666 - info@cami-nv.com

easy to plan

Remember - each Planorama® is made to measure to fulfil individual storage needs of width, depth and drawer height configurations (Including ISO formats 4A, 2A, A0, A1, A2, A3, A4). Drawers of different heights can be combined together within a module (see guide below).

Conservation

- Designed for conservation the Planorama® system offers lightweight, efficient storage in inert materials and protection from light, pollutants and dust.
- Customised drawer inserts using tested and safe inert materials.
- Dust brushes fitted vertically and horizontally to the cabinets and along the length of each drawer minimise dust and light ingress.

Emergency Planning



Deep base plinth at Worcester Cathedral.

- Easy to remove, lightweight drawers allow safe and swift relocation of drawer and contents in an emergency.
- Base plinth or support frame enables cabinet to be raised clear of floor for flood precautions.
- Plinths can be supplied with access base for pallet truck or fork lift movement.



Valuable artifacts can be displayed under a secure showcase hood and stored in corresponding cabinet drawer behind a lockable door. (See Robert Senior testimonial on back page).

Display options

- Vertical display frames - called **Framorama** - are designed to take drawers to easily exhibit contents
- Museum showcase for secure display above Planorama® drawer base.



Using the transparent protective holding strips items can be displayed vertically in a Framorama frame



Ability to easily alternate items on display - using the Planorama® drawer in the Framorama frame. (See Don Smith testimonial on back page).

British Postal Museum & Archive uses Planorama® display frames.
 "We chose the Planorama display frames as a secure option, half-way between a display cabinet and a picture frame; which allows us to display both flat material and 3-dimensional objects together."

British Postal Museum & Archive (BPMA), Royal College of Art



MODULES HEIGHT (Bespoke Width)	MODULES HEIGHT						
	204mm High	416mm High	592mm High	768mm High	944mm High	1120mm High	1296mm High
No. OF DRAWERS (External Height)							
10mm	16	32	48	64	80	96	112
20mm	8	16	24	32	40	48	56
42mm	4	8	12	16	20	24	28
64mm	2+	5+	8	10+	13+	16	18
86mm	2	4	6	8	10	12	14
108mm	1+	3+	4+	6+	8	9+	11+

The + symbol denotes additional space available for a smaller drawer or infill panel.